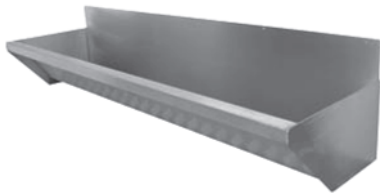


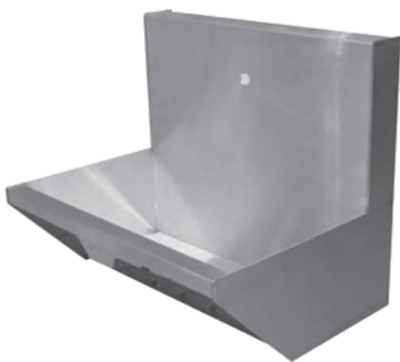
Manufactured from 1.2mm thick grade 304, satin polished stainless steel, supplied with brackets and 38mm plastic grated waste (in a left, right or central position). Available in any length, up to 3000mm, allowing approximately 600mm per person.



W13 - Contract Washtrough
315mm wide x 200mm deep



W14 - Taplanding Washtrough
370mm wide x 200mm deep



W15 - Splashback Washtrough
355mm wide x 200mm deep
with 300mm splashback



W16 - Island Washtrough
740mm wide x 900mm high

Optional Extras



S9401 - Swan-neck spout



K9302 - Knee-operated valve
frame-mounted, non-convulsive



T9622 - Thermostatic valve 22mm



S9402 - Bib spout



F9304 - Foot-operated valve
non-convulsive



K9301 - Knee-operated valve
wall-mounted, 20 second timed delay

S17 - Loose splashback 300mm high

L1799 - Stainless steel leg supports