

WC pans are manufactured from 1.6 and 2mm thick grade 304, satin polished stainless steel, with security flushing rim, 76/102mm diameter plastic pan connector and 38mm diameter flushpipe connection. Cisterns and flushpipes are manufactured from 1.2mm grade 304, satin polished stainless steel, with plastic cistern fittings.



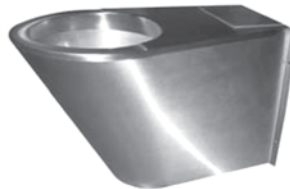
W1001 - Pedestal WC Pan - P trap
W1002 - Pedestal WC Pan - S trap
 335x485x410mm high
C1195 - Low level cistern
 498x186x295mm high
W1099 - Black plastic seat and cover



W1003 - Shrouded WC Pan - P trap
 350x490x390mm high
W1004 - Shrouded WC Pan - S trap
 350x640x390mm high



W1005 - Wall-mounted WC Pan - P trap
 350x490x345mm
S1188 - Black polypropylene seat pads



W1006 - Disabled WC Pan - P trap
W1007 - Disabled WC Pan - S trap
 350x750x450mm high



W1011 - Squatting WC Pan
 110 spigot
 700x700mm



W1008 - Close-coupled WC Suite
 350x640x867mm high
S1188 - Black polypropylene seat pads



W1010 - Rear-panelled WC Suite
 350x625x1030mm high

Optional Extras

W1099 - Black plastic seat and cover
S1187 - Stainless steel WC seat hinges
D0100 - Disabled plinth - 50mm high

S1188 - Black polypropylene seat pads
C1197 - Disabled cistern lever
W103 - Stainless steel clad WC Cubicles